



AN-7780-XP,98SE

MCS7780

Windows-XP & Windows-98SE

Revision 2.0

5th August 2004

**All information in this document is believed to be accurate as of the date published.**

**All brands or product names are the property of their respective holders.**

**MosChip Semiconductor products are not authorized for use as critical components in life support devices or systems without the express written approval of the president of MosChip Semiconductor, Ltd.**

**MosChip Semiconductor believes the information in this document to be accurate and reliable. However, it is subject to change without notice. No responsibility is assumed by MosChip Semiconductor for its use, nor for infringement of patent or other rights of third parties. No part of this document may be reproduced, or transmitted in any form or by any means without prior consent of MosChip Semiconductor, Ltd.**

**Copyright © 2004 MosChip Semiconductor All Rights Reserved.**

## TABLE OF CONTENTS

### **Win XP Operating System**

1.Downloading of Drivers, Installation & Detection .....	4
2.Un-installation .....	10
3.Reinstalling the Drivers .....	12
4.Establishing IrDA Connection with another PC .....	13

### **Win98 SE Operating System**

5.Downloading of Drivers, Installation & Detection .....	15
6.Reinstalling the Drivers .....	16
7.Un-installation .....	16
8.Establishing IrDA Connection with another PC .....	17

---

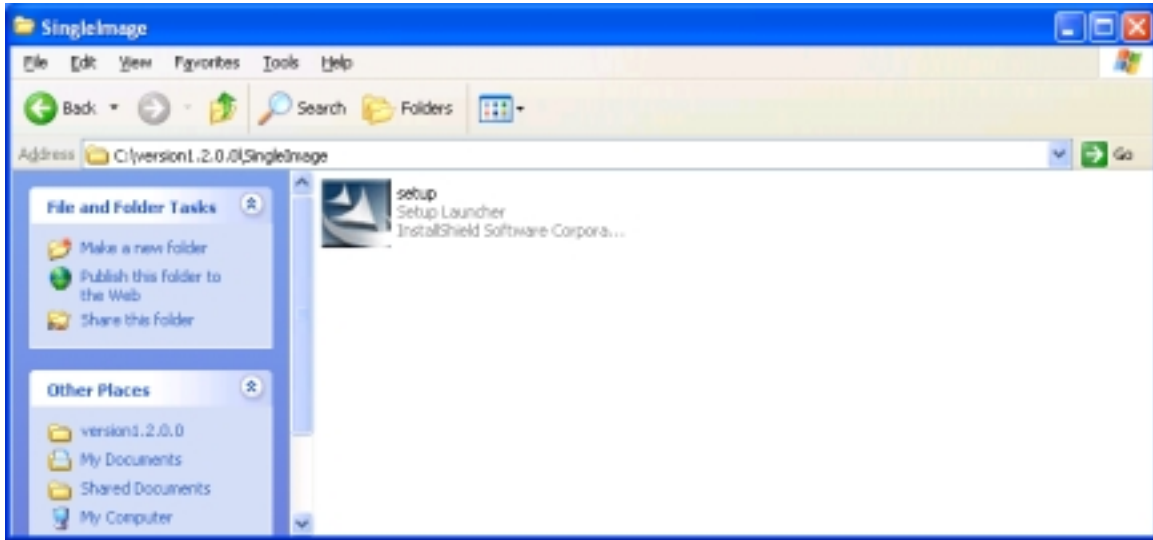
## Windows-XP Operating System

### 1.1 Downloading of Drivers, Installation & Detection

- a) Go to <http://www.moschip.com> , Click the “Products” button, Click the “USB1.1” button, Under MCS7780 click on “Drivers, Release Notes and Installation Guides”. Then download the contents ( \*.zip file ) onto your local Hard disk.
- b) Unzip the Driver files to a new folder on your Hard Disk. (E.g. C:\MCS7780).
- c) If a CDROM is provided with the driver files, store the driver files from CDROM to the local Hard Disk ( E.g. C:\MCS7780).
- d) Check the new folder with the Driver files (E.g. C:\MCS7780) for a “Readme” file. Instructions in the “Readme” file can be referred to in case of installation problems when following this installation procedure.
- e) Repeat steps “a” to “d” for other PC if MCS7780 is used

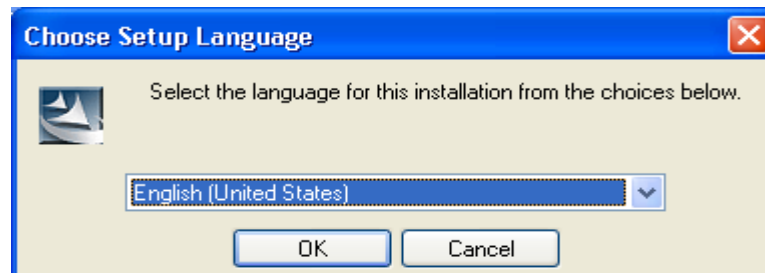
## **1.2 Installing drivers for first time & Detection:-**

a) Following contents can be seen in the driver disk of MCS7780.



Double click on setup in above window to install the drivers.

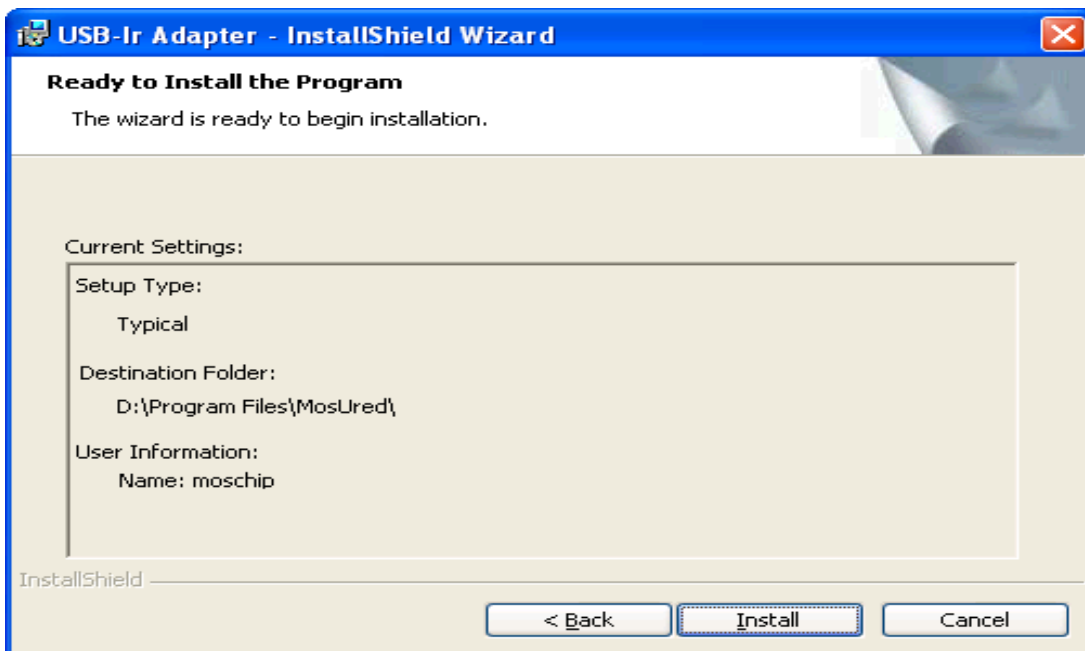
b) A popup screen appears with language option, language as used in PC would be displayed by default. For example if the user is using Win XP English then it displays the language as English ( United States ). Click on OK to proceed further.



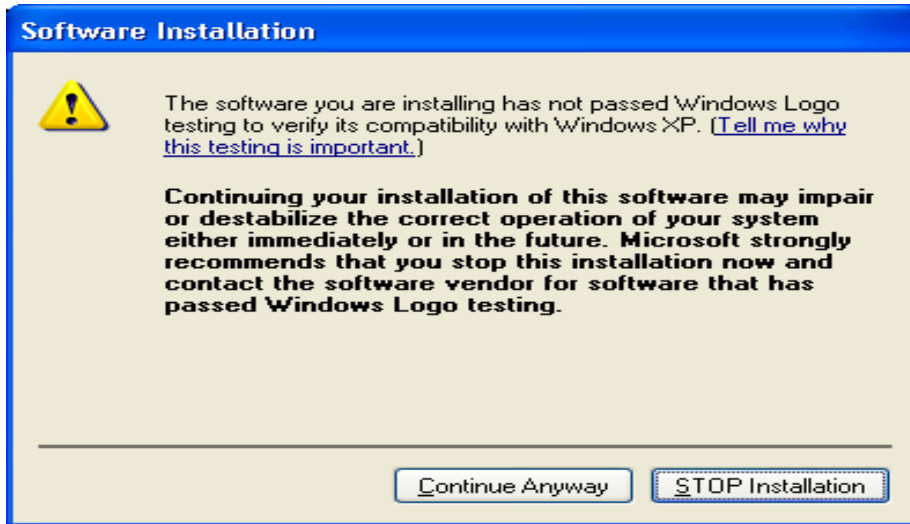
- c) Welcome window of InstallShield wizard will install MCS7780 device on your computer. To continue, click Next.



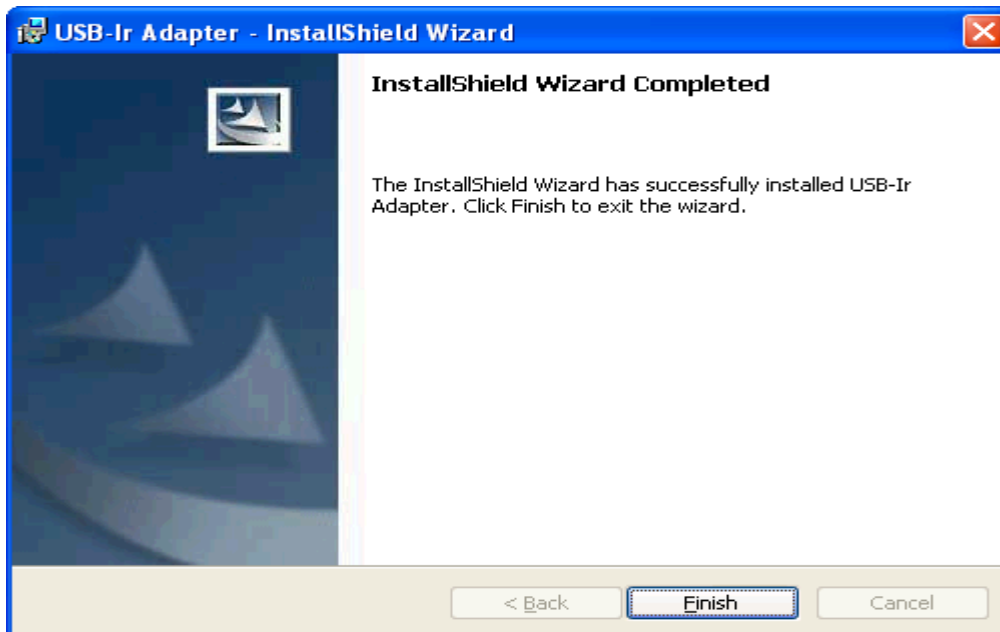
- d) Click on Install to begin the installation.



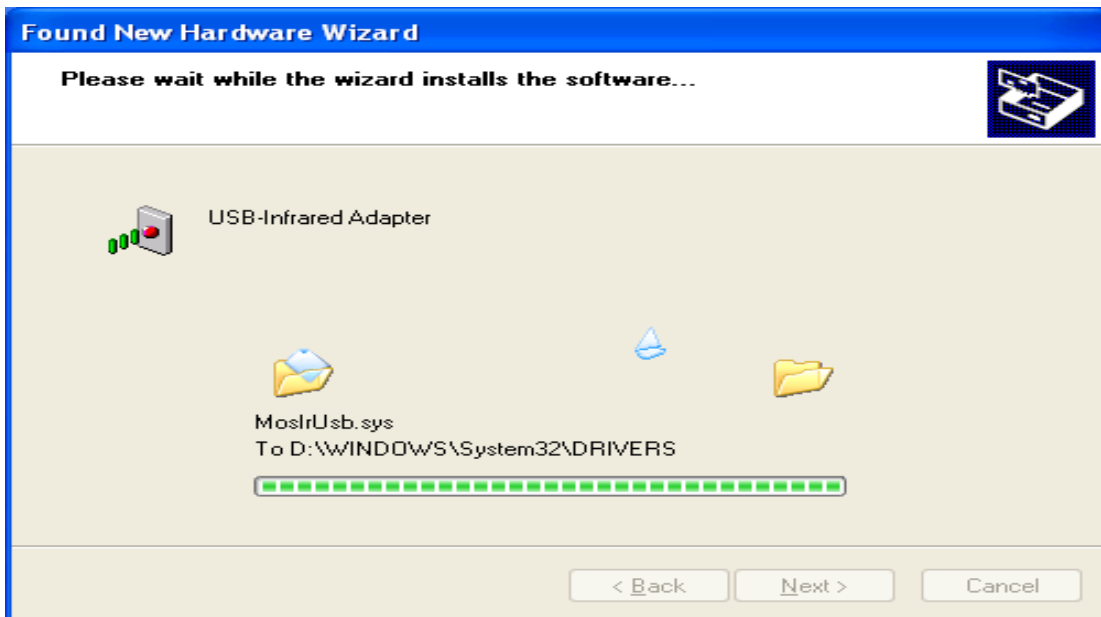
- e) In WinXP OS will popup a window stating the software that is being installed has not passed Windows Logo testing. Click on Continue Anyway.



- f) This completes the InstallShield wizard. Click on Finish to exit the wizard.



- g) Now connect MCS7780 device to USB port of your PC. Found New Hardware wizard window appears. Click on Next to continue

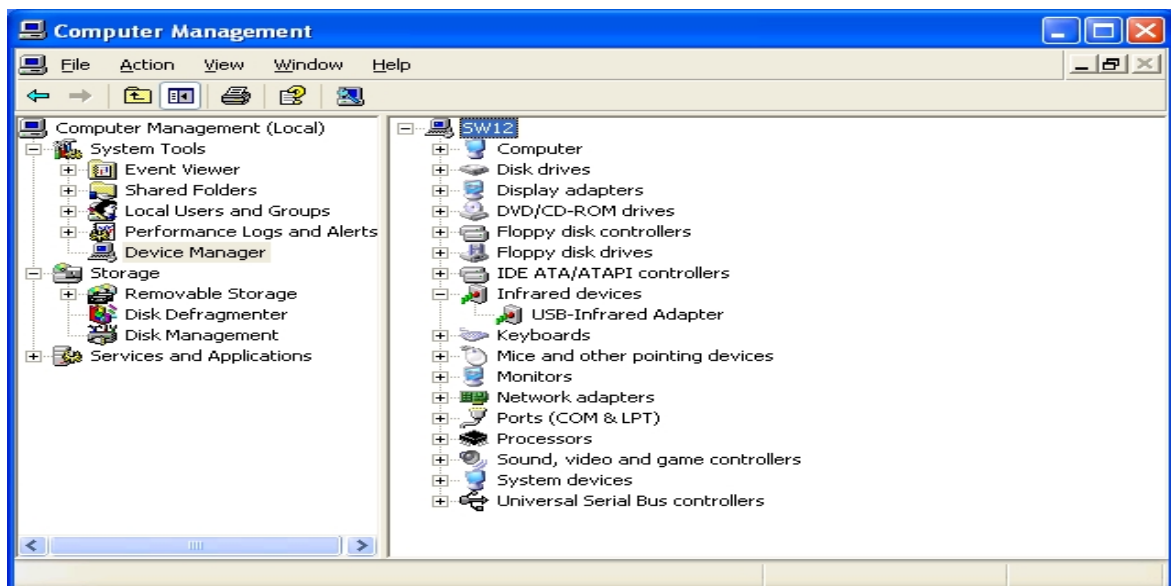




- h) This completes the installation process of MCS7780. Click on Finish to close the wizard.



- i) Correct Detection of MCS7780 can be confirmed by seeing Device Manager contents under Infrared devices, presence of USB-Infrared Adapter confirms correct detection of MCS7780 adapter.

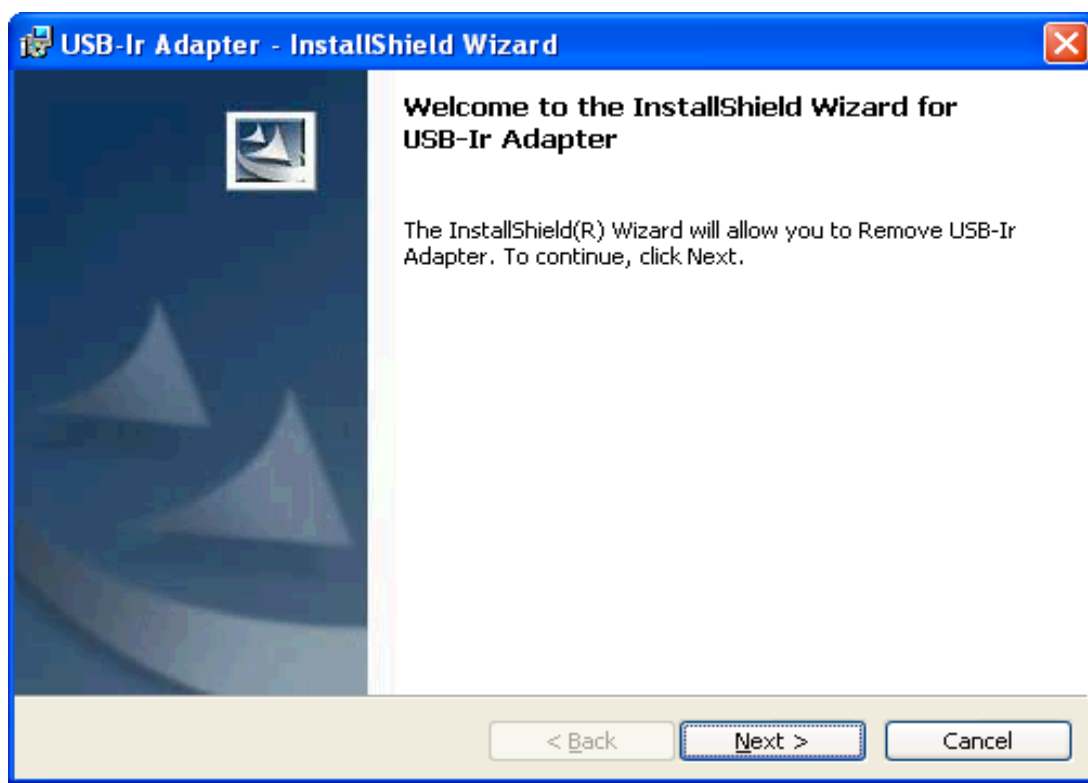


## 2. Un-installation :-

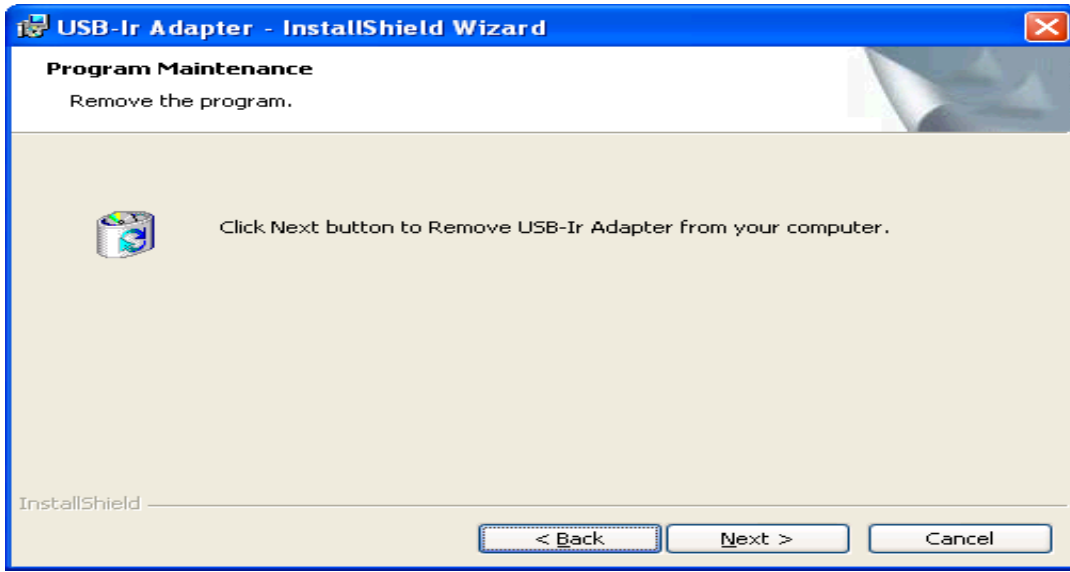
InstallShield setup of MCS7780 serves the purpose of both installation as well as Uninstallation of the drivers. For example if the drivers are installed for the first time then InstallShield will install the drivers, where as if the drivers are already installed then the InstallShield will uninstall the drivers.

### **2.1 Double click on setup.exe icon in MCS7780 driver disk to remove drivers of MCS7780.**

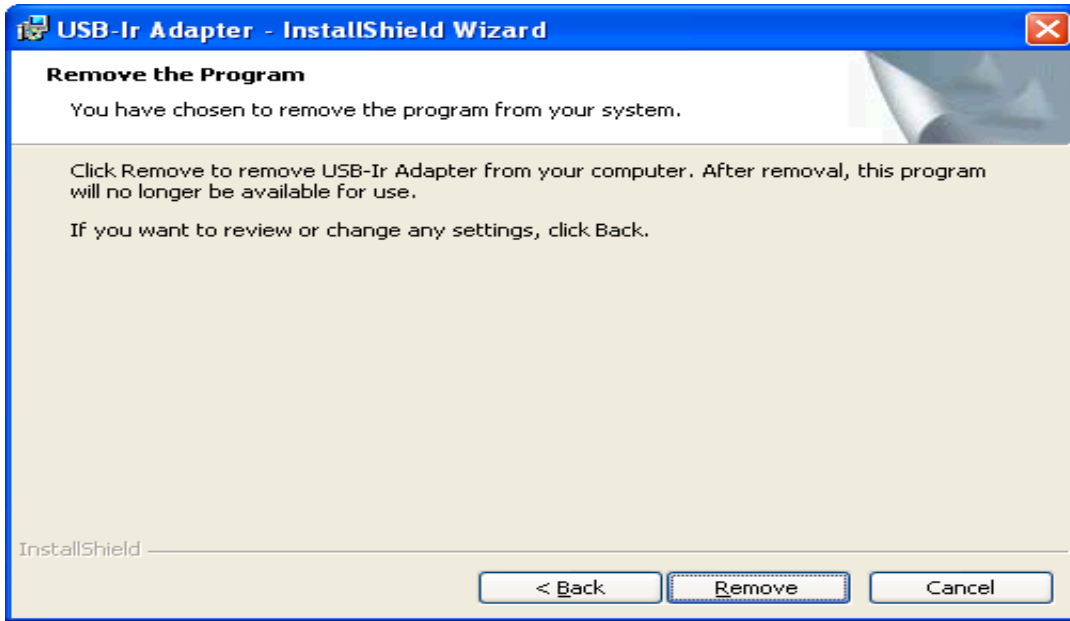
a) Following screen would appear, click on Next.



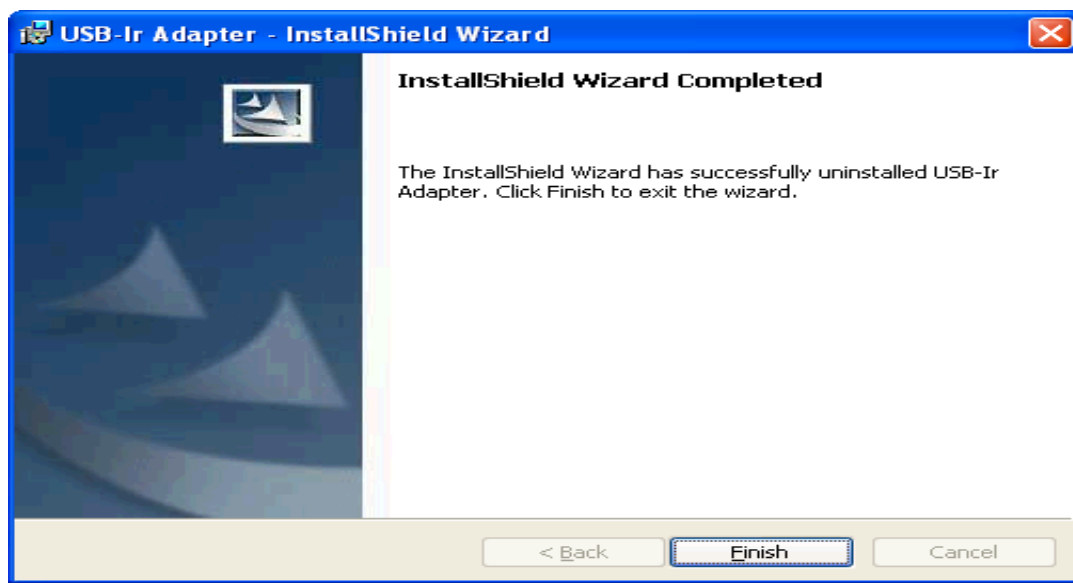
- b) To remove MCS7780 drivers from your computer click on Next.



- c) The application prompt's whether the user wants to remove the device from the computer. Click on Remove to Uninstall the drivers.



d) This completes the Uninstallation process. Click on Finish to exit the wizard.

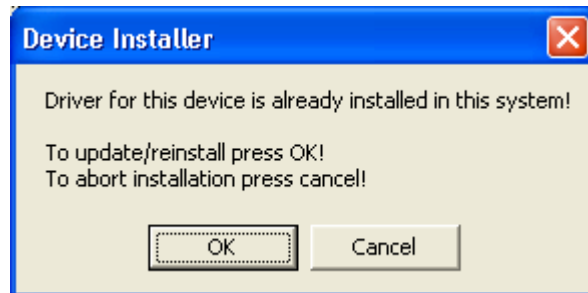


## 2.2 Un-install through control Panel

Drivers can be removed through Control Panel , Add / Remove programs also.

## 3 . Updating / Re-installing the Drivers

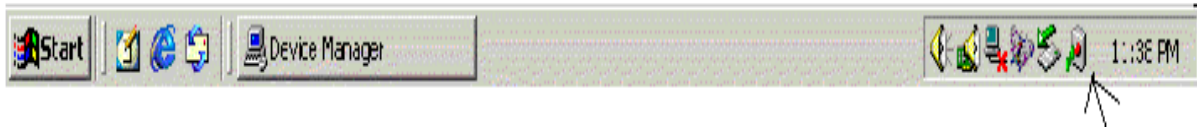
To update the drivers follow the same process as described in the Installation procedure. The only difference is the InstallShield pops up a window stating that the drivers for the device is already installed. Click on OK to Update\Reinstall the drivers.



If MCS7780 is already connected, Unplug / plug the MCS7780 into USB port to load reinstalled drivers.

#### 4. Establishing IrDA Connection with another PC:

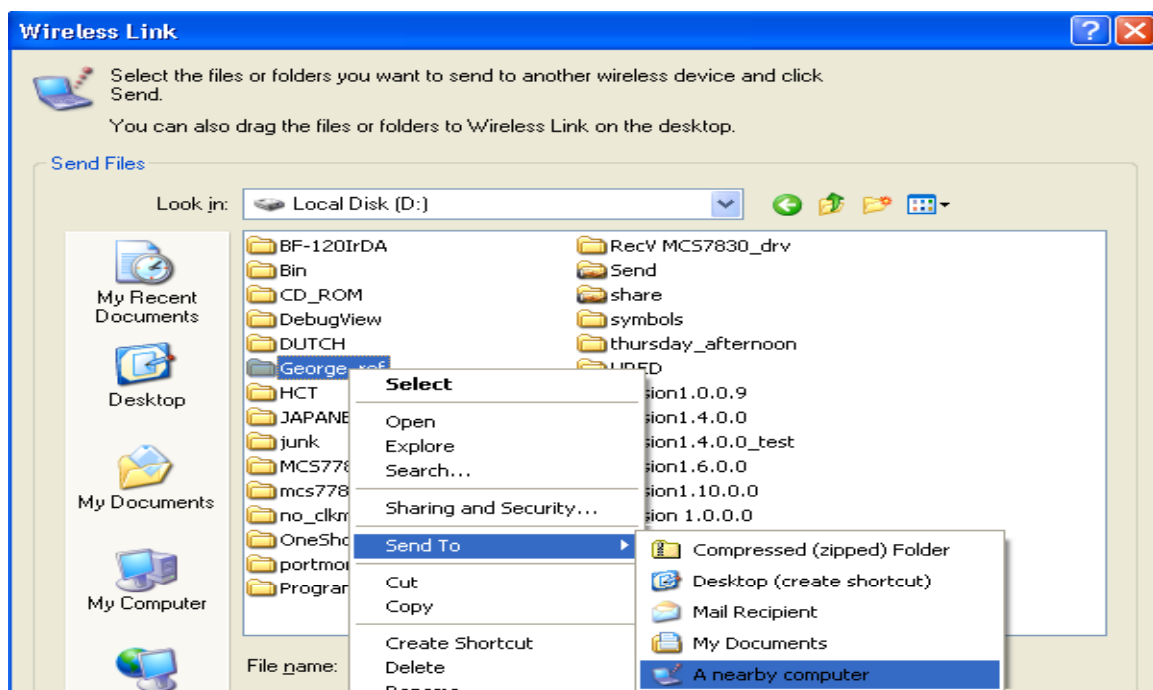
a) After confirming the detection of MCS7780 as indicated above, Place any other IR device ( Eg. PDA, Cell phone or Notebook with IR port ) in the range of MCS7780. You will find a popup text message in Task bar as another IR device in range & IR icon appears in task bar as below.



b) As IR connection icon appears on Taskbar, following Wireless link icon appears on the desktop of Windows XP.

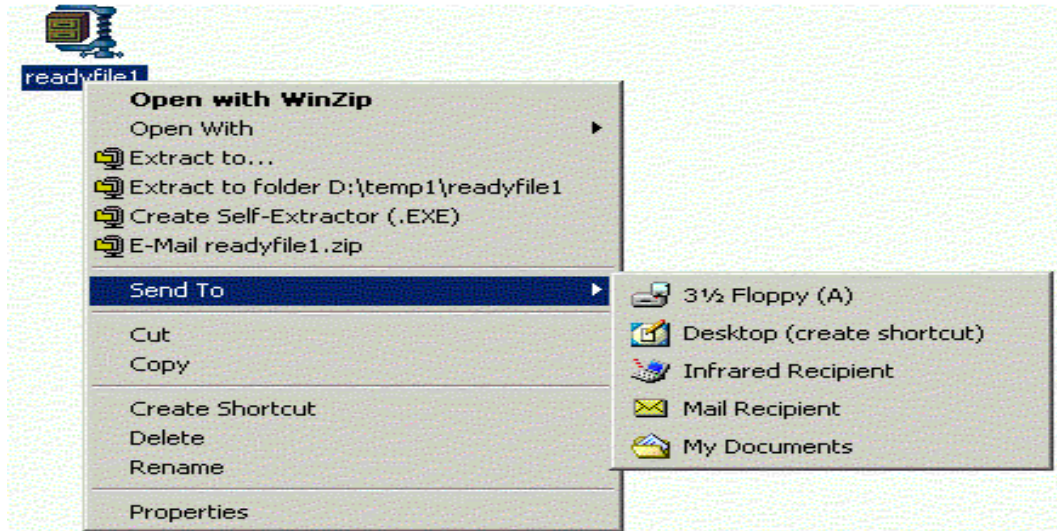


c) Double click on the IRDA icon in Taskbar, This opens following Wireless link window by which you can send / receive data.

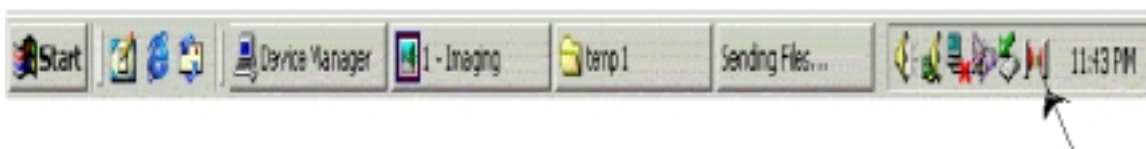


Go to specified File or Folder path, Select the File or Folder to be transferred , Right Click >> send to >> Infrared Recipient **or** Double Click >> Send button available In application window.

- d) Any File or Folder can also be transferred by following method. Select the File or Folder from required location >> right click >> Send To >> Infrared Recipient.



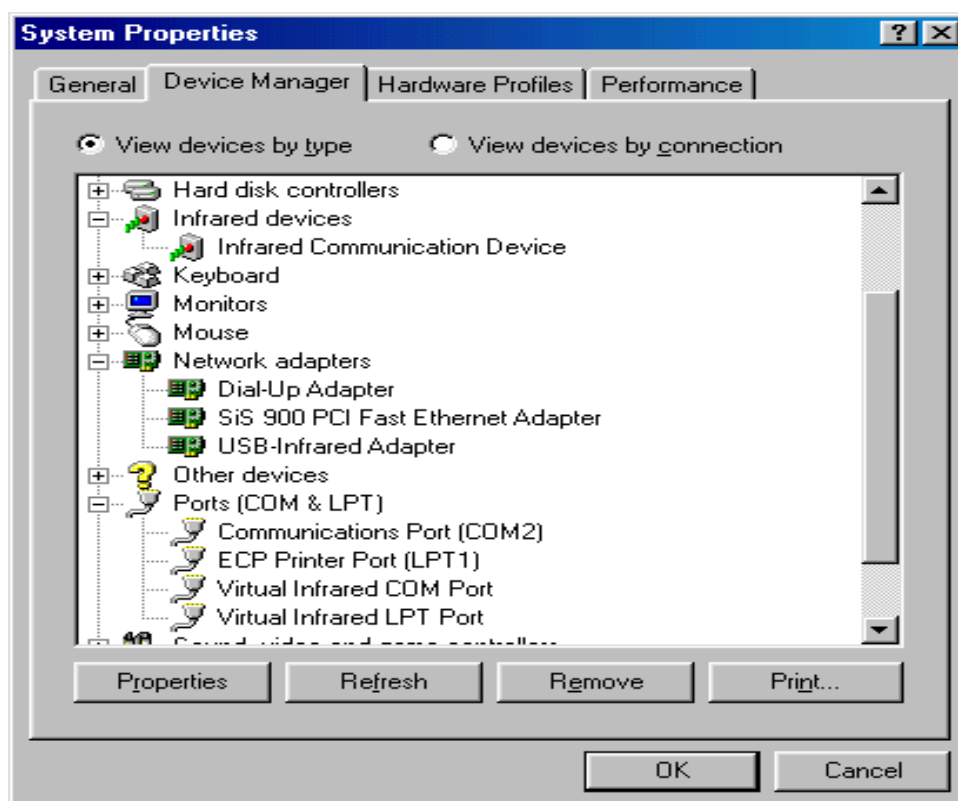
- e) As the transfer of data is in progress. The following IRDA Icon appears in the Task Bar indicating data transfer is in progress. Moving the Cursor onto this Icon displays the connection speed of IRDA link. (Under Win XP / 2K / ME Only)



## Windows-98SE Operating System

### 5. Downloading of Drivers, Installation & Detection

Downloading, Installation & Detection of driver for MCS7780 under Windows 98SE is same as that of Windows XP. Only the Device Manger detection confirmation would different, following is the screen shot of MCS7780 detection under Win 98SE.



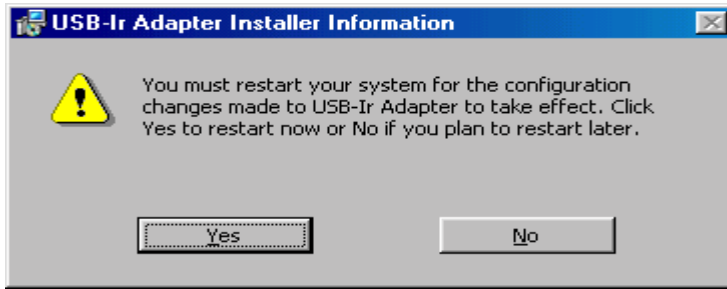
Check for for USB- SIR Adapter under Network adapters & Virtual Infrared COM and LPT Ports under Ports (COM & LPT)

**6. Re-installation** :- Follow the Re-installation procedure as described for Win XP. In case of Win98 SE the OS will ask for restarting the system once the drivers are installed

## **7. Un-installation :-**

Follow the Uninstall procedure as described for Win XP. In case of Win98 SE the O/S will ask for restarting the system once the drivers are uninstalled.

As the Un-installation is over, following screen would appear. System will ask for Reboot. Click Yes to Reboot.



## **8. Establishing IrDA Connection with another PC:**

- a) As the MCS7780 is plugged into PC USB port & the detection is confirmed as above. You would find an icon in Taskbar .



- b) Click on Option Tab in above window & Enable Infrared Communication. Click on





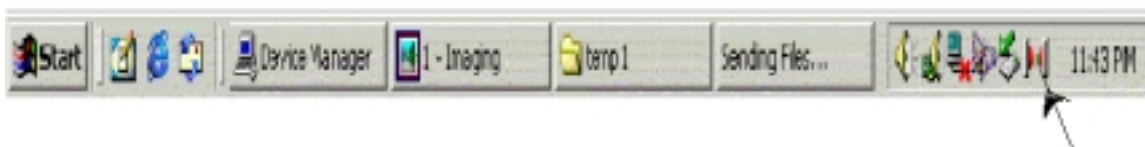
Apply, then Ok to close the window.

- c) With Above selection IRDA Communication gets enabled & following icon appears in Taskbar of Win 98SE.



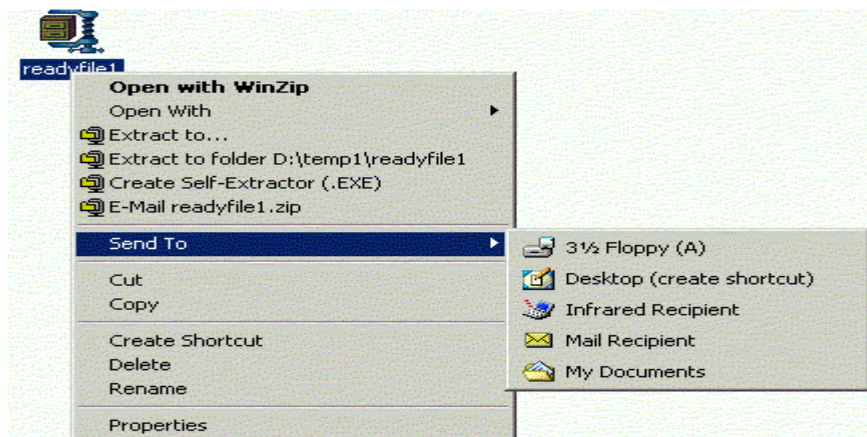
- d) Now Place any other IR device ( Eg. PDA, Cell phone or Notebook with IR port ) in the range of MCS7780.

You will find a popup text message in Task bar as another IR device in range & IR icon appears in task bar as below.



As the transfer of data is in progress. Above IRDA Icon shows the file transfer activity.

- e) Any File or Folder can also be transferred by following method. Select the File or Folder from required location >> right click >> Send To >> Infrared Recipient.



**Note** :- Two PC's can also be connected through IR Network connection through PPP connection ( Start > Programs > Accessories > Communications > Network and Dial-up connections > Make new connection ). Application note with these details can be provided Separately

**Installation Procedure of Windows 2000 , ME would be in the similar lines to that of Windows XP OS.**

**Technical Support**

If you encounter any technical problem, please contact us through: [www.moschip.com](http://www.moschip.com)

**Change Log**

2.0	AJN	5th August 2004	Install Shield Initial Release.
-----	-----	-----------------	---------------------------------